

# Highfield St Matthew's CE Primary School



*As Jesus tells us, 'Let your light shine before others, that they may see your good works, and glorify your Father who is in heaven' (Matthew 5:13).*

## Supporting Pupils With Medical Conditions/Managing Medicines in School Policy

March 2023

Approved by Governors: 20/3/23

Review Date: March 2026

## **Our Christian Vision**

*'Let your light shine before others, that they may see your good works, and glorify your Father who is in heaven'* (Matthew 5:16). Our vision inspires and challenges the community we serve to achieve excellence in all they do, and to learn about life in all its fullness, within a welcoming Christian family.

## **School Aims – How we will Let Our Light Shine**

- Every child feels valued, safe and cared for, and makes a positive contribution to their own development and the life of the school, with Christ at its centre
- Our bespoke SHINE curriculum, based on excellence and high expectations, provides rich experiences which motivates, challenges, develops resilience and meets the needs of all children
- Every child achieves their potential and develops their talents and creativity, preparing them for a role in a global society with a lifelong love for learning
- Children & families develop understanding of a faith and Christian values that can guide their lives; knowing Jesus, and putting into action what they are coming to believe and value
- The whole school family flourishes and serves the local Church and community

### **Aims:**

This policy aims to ensure that:

- Pupils, staff and parents understand how our school will support pupils with medical conditions
- Pupils with medical conditions are properly supported to allow them to access the same education as other pupils, including school trips and sporting activities
- To ensure that procedures and practice concerning the administration of medicines at school are clear and those involved know and comply with them

The governing board will implement this policy by:

- Making sure sufficient staff are suitably trained
- Making staff aware of pupils' conditions, where appropriate
- Making sure there are cover arrangements to ensure someone is always available to support pupils with medical conditions
- Providing supply teachers with appropriate information about the policy and relevant pupils
- Developing and monitoring individual healthcare plans (IHPs)

***The named person with responsibility for implementing this policy is Rebecca Holland***

### **Legislation and statutory responsibilities**

This policy meets the requirements under [Section 100 of the Children and Families Act 2014](#), which places a duty on governing boards to make arrangements for supporting pupils at their school with medical conditions.

It is also based on the Department for Education (DfE)'s statutory guidance on [supporting pupils with medical conditions at school](#).

This policy also complies with our funding agreement and articles of association.

### **Roles and responsibilities**

## **The governing board**

The governing board has ultimate responsibility to make arrangements to support pupils with medical conditions. The governing board will ensure that sufficient staff have received suitable training and are competent before they are responsible for supporting children with medical conditions.

## **The headteacher**

The headteacher will:

- Make sure all staff are aware of this policy and understand their role in its implementation
- Ensure that there is a sufficient number of trained staff available to implement this policy and deliver against all individual healthcare plans (IHPs), including in contingency and emergency situations
- Ensure that all staff who need to know are aware of a child's condition
- Take overall responsibility for the development of IHPs
- Make sure that school staff are appropriately insured and aware that they are insured to support pupils in this way
- Contact the school nursing service in the case of any pupil who has a medical condition that may require support at school, but who has not yet been brought to the attention of the school nurse
- Ensure that systems are in place for obtaining information about a child's medical needs and that this information is kept up to date

## **Staff**

Supporting pupils with medical conditions during school hours is not the sole responsibility of one person. Any member of staff may be asked to provide support to pupils with medical conditions, although they will not be required to do so. This includes the administration of medicines.

Those staff who take on the responsibility to support pupils with medical conditions will receive sufficient and suitable training, and will achieve the necessary level of competency before doing so.

Teachers will take into account the needs of pupils with medical conditions that they teach. All staff will know what to do and respond accordingly when they become aware that a pupil with a medical condition needs help.

## **Parents**

Parents will:

- Provide the school with sufficient and up-to-date information about their child's medical needs
- Be involved in the development and review of their child's IHP and may be involved in its drafting
- Carry out any action they have agreed to as part of the implementation of the IHP, e.g. provide medicines and equipment, and ensure they or another nominated adult are contactable at all times

## **Pupils**

Pupils with medical conditions will often be best placed to provide information about how their condition affects them. Pupils should be fully involved in discussions about their medical support needs and contribute as much as possible to the development of their IHPs. They are also expected to comply with their IHPs.

## **School nurses and other healthcare professionals**

Our school nursing service will notify the school when a pupil has been identified as having a medical condition that will require support in school. This will be before the pupil starts school, wherever possible. They may also support staff to implement a child's IHP.

Healthcare professionals, such as GPs and paediatricians, will liaise with the school's nurses and notify them of any pupils identified as having a medical condition. They may also provide advice on developing IHPs.

## **Equal opportunities**

Our school is clear about the need to actively support pupils with medical conditions to participate in school trips and visits, or in sporting activities, and not prevent them from doing so.

The school will consider what reasonable adjustments need to be made to enable these pupils to participate fully and safely on school trips, visits and sporting activities.

Risk assessments will be carried out so that planning arrangements take account of any steps needed to ensure that pupils with medical conditions are included. In doing so, pupils, their parents and any relevant healthcare professionals will be consulted.

## **Being notified that a child has a medical condition**

When the school is notified that a pupil has a medical condition, the process outlined below will be followed to decide whether the pupil requires an IHP.

The school will make every effort to ensure that arrangements are put into place within 2 weeks, or by the beginning of the relevant term for pupils who are new to our school.

See Appendix 1.

## **Individual healthcare plans (IHPs)**

The headteacher has overall responsibility for the development of IHPs for pupils with medical conditions. This has been delegated to Rebecca Holland, Assistant Headteacher/Inclusion Leader.

Plans will be reviewed at least annually, or earlier if there is evidence that the pupil's needs have changed.

Plans will be developed with the pupil's best interests in mind and will set out:

- What needs to be done

- When
- By whom

Not all pupils with a medical condition will require an IHP. It will be agreed with a healthcare professional and the parents when an IHP would be inappropriate or disproportionate. This will be based on evidence. If there is no consensus, the headteacher will make the final decision.

Plans will be drawn up in partnership with the school, parents and a relevant healthcare professional, such as the school nurse, specialist or paediatrician, who can best advise on the pupil's specific needs. The pupil will be involved wherever appropriate.

IHPs will be linked to, or become part of, any education, health and care (EHC) plan. If a pupil has SEN but does not have an EHC plan, the SEN will be mentioned in the IHP.

The level of detail in the plan will depend on the complexity of the child's condition and how much support is needed. The governing board and Inclusion Leader, will consider the following when deciding what information to record on IHPs:

- The medical condition, its triggers, signs, symptoms and treatments
- The pupil's resulting needs, including medication (dose, side effects and storage) and other treatments, time, facilities, equipment, testing, access to food and drink where this is used to manage their condition, dietary requirements and environmental issues, e.g. crowded corridors, travel time between lessons
- Specific support for the pupil's educational, social and emotional needs. For example, how absences will be managed, requirements for extra time to complete exams, use of rest periods or additional support in catching up with lessons, counselling sessions
- The level of support needed, including in emergencies. If a pupil is self-managing their medication, this will be clearly stated with appropriate arrangements for monitoring
- Who will provide this support, their training needs, expectations of their role and confirmation of proficiency to provide support for the pupil's medical condition from a healthcare professional, and cover arrangements for when they are unavailable
- Who in the school needs to be aware of the pupil's condition and the support required
- Arrangements for written permission from parents and the headteacher for medication to be administered by a member of staff, or self-administered by the pupil during school hours
- Separate arrangements or procedures required for school trips or other school activities outside of the normal school timetable that will ensure the pupil can participate, e.g. risk assessments
- Where confidentiality issues are raised by the parent/pupil, the designated individuals to be entrusted with information about the pupil's condition
- What to do in an emergency, including who to contact, and contingency arrangements

### **Managing Medicines in School**

Prescription and non-prescription medicines will only be administered at school:

- When it would be detrimental to the pupil's health or school attendance not to do so **and**
  - Where we have parents' written consent
- As a general guide, school will usually only accept medication for short term illnesses e.g. antibiotics if these need to be administered 4 times per day or more frequently. Medication

needed less frequently may be administered if a pupil is attending an after school club or wrap around care **by authorisation of a senior leader**

- Non-prescribed medication, e.g. cough linctus, pain relief, travel sickness tablets, analgesia **will not be accepted in school unless in exceptional circumstances and by authorisation of a senior leader.**

Pupils under 16 will not be given medicine containing aspirin unless prescribed by a doctor.

Anyone giving a pupil any medication (for example, for pain relief) will first check maximum dosages and when the previous dosage was taken. Parents will always be informed.

The school will only accept prescribed medicines that are:

- In-date
- Labelled
- Provided in the original container, as dispensed by the pharmacist, and include instructions for administration, dosage and storage

The school will accept insulin that is inside an insulin pen or pump rather than its original container, but it must be in date.

All medicines will be stored safely. Pupils will be informed about where their medicines are at all times and be able to access them immediately. Medicines and devices such as asthma inhalers, blood glucose testing meters and adrenaline pens will always be readily available to pupils and not locked away.

Medicines will be returned to parents to arrange for safe disposal when no longer required.

- Parents/carers should hand over all medication to a member of the school office team and complete a consent form
- The school office are responsible for checking medication labels, dosage and consent forms are correct. *If a pupil is attending a Trinity Breakfast session, medication can be handed over to the Manager or Deputy Manager and a consent form completed. Trinity staff **must** pass medication and consent form to the school office*
- The school office team should liaise with a Senior Leader if there may be exceptional circumstances as to when medication will/will not be accepted.
- The school office team will make the class teacher aware of any medication which is to be taken and log the medication onto the daily record
- Class teachers/support staff must inform the school office when medication has been administered so this can be checked off against the daily record.
- A record of medicine being administered is completed after every dose of medication is given and kept in the medication file.
- All medicines being administered must be witnessed and countersigned by a Senior Leader or other delegated person
- The school office team will check towards the end of each school day that all medication has been administered (to be delegated to a senior leader if no office staff are available)
- Medication can only be handed back to parents at the school office or by the Manager or Deputy Manager of Trinity

### **Controlled drugs**

[Controlled drugs](#) are prescription medicines that are controlled under the [Misuse of Drugs Regulations 2001](#) and subsequent amendments, such as morphine or methadone.

All other controlled drugs are kept in a secure cupboard in the Senior Leadership Offices and only staff have access.

Controlled drugs will be easily accessible in an emergency and a record of any doses used and the amount held will be kept.

### **Pupils managing their own needs**

Pupils who are competent will be encouraged to take responsibility for managing their own medicines and procedures. This will be discussed with parents and it will be reflected in their IHPs.

Pupils will be allowed to carry their own medicines and relevant devices wherever possible. Staff will not force a pupil to take a medicine or carry out a necessary procedure if they refuse, but will follow the procedure agreed in the IHP and inform parents so that an alternative option can be considered, if necessary.

### **Unacceptable practice**

School staff should use their discretion and judge each case individually with reference to the pupil's IHP, but it is generally not acceptable to:

- Prevent pupils from easily accessing their inhalers and medication, and administering their medication when and where necessary
- Assume that every pupil with the same condition requires the same treatment
- Ignore the views of the pupil or their parents
- Ignore medical evidence or opinion (although this may be challenged)
- Send children with medical conditions home frequently for reasons associated with their medical condition or prevent them from staying for normal school activities, including lunch, unless this is specified in their IHPs
- If the pupil becomes ill, send them to the school office or medical room unaccompanied or with someone unsuitable
- Penalise pupils for their attendance record if their absences are related to their medical condition, e.g. hospital appointments
- Prevent pupils from drinking, eating or taking toilet or other breaks whenever they need to in order to manage their medical condition effectively
- Prevent pupils from participating, or create unnecessary barriers to pupils participating in any aspect of school life, including school trips, e.g. by requiring parents to accompany their child
- Administer, or ask pupils to administer, medicine in school toilets

### **Emergency procedures**

Staff will follow the school's normal emergency procedures (for example, calling 999). All pupils' IHPs will clearly set out what constitutes an emergency and will explain what to do.

If a pupil needs to be taken to hospital, staff will stay with the pupil until the parent arrives, or accompany the pupil to hospital by ambulance.

### **Training**

Staff who are responsible for supporting pupils with medical needs will receive suitable and sufficient training to do so.

The training will be identified during the development or review of IHPs. Staff who provide support to pupils with medical conditions will be included in meetings where this is discussed.

The relevant healthcare professionals will lead on identifying the type and level of training required and will agree this with the Inclusion Leader. Training will be kept up to date.

Training will:

- Be sufficient to ensure that staff are competent and have confidence in their ability to support the pupils
- Fulfil the requirements in the IHPs
- Help staff to have an understanding of the specific medical conditions they are being asked to deal with, their implications and preventative measures

Healthcare professionals will provide confirmation of the proficiency of staff in a medical procedure, or in providing medication.

All staff will receive training so that they are aware of this policy and understand their role in implementing it, for example, with preventative and emergency measures so they can recognise and act quickly when a problem occurs. This will be provided for new staff during their induction.

### **Record keeping**

The governing board will ensure that written records are kept of all medicine administered to pupils for as long as these pupils are at the school. Parents will be informed if their pupil has been unwell at school.

IHPs are kept in a readily accessible place which all staff are aware of.

A record of administration of medication is completed every time a pupil has medicine administered. This is countersigned by a senior leader or delegated person who has witnessed the medication being administered.

### **Liability and indemnity**

The governing board will ensure that the appropriate level of insurance is in place and appropriately reflects the school's level of risk.

The school's insurance is arranged through LDST. We will ensure that we are a member of the Department for Education's risk protection arrangement (RPA).

### **Complaints**

Parents with a complaint about their child's medical condition should discuss these directly with the Inclusion Leader in the first instance. If the Inclusion Leader cannot resolve the matter, they will direct parents to the school's complaints procedure.

### **Monitoring arrangements**

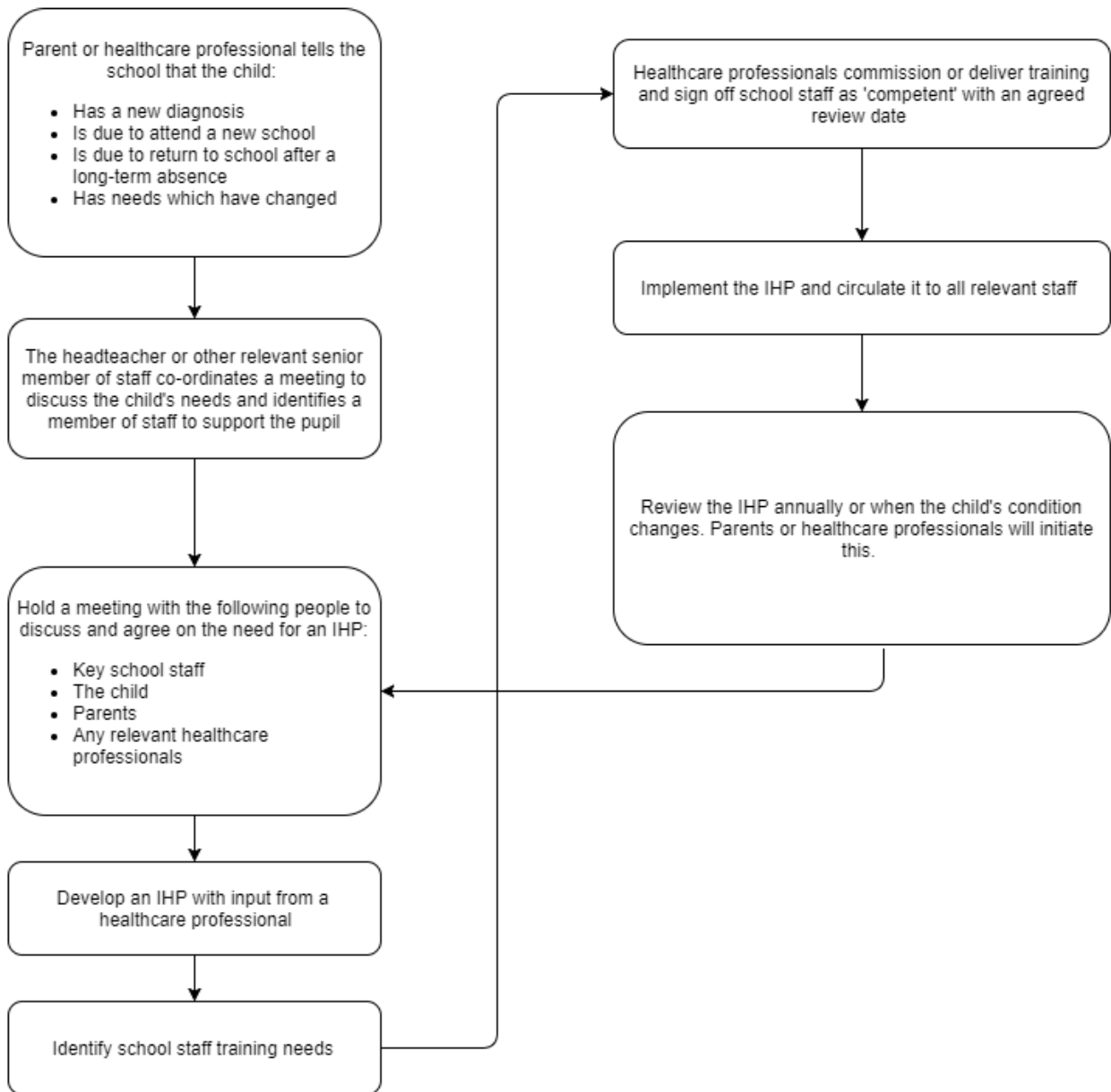
This policy will be reviewed and approved by the governing board every 2 years.

**Links to other policies**

This policy links to the following policies:

- Accessibility plan
- Complaints
- Equality information and objectives
- First aid
- Health and safety
- Child Protection
- Special educational needs information report and policy

## Appendix 1



Appendix 2



**HIGHFIELD ST. MATTHEW'S C.E. PRIMARY SCHOOL**

Billinge Road, Pemberton, WIGAN, WN3 6BL

Telephone: (01942) 747818  
Email: [HSTM@ldst.org.uk](mailto:HSTM@ldst.org.uk)  
Headteacher: Mrs A Barron

**Medication Permission Form**

Child's Name .....Class .....

Name of medication .....

Date medication provided by parent .....

Dose and method .....

Time to be administered .....

Expiry date of medicine .....

Any other relevant information .....

The above information is, to the best of my knowledge, accurate at the time of writing and I give consent to school/setting staff administering medicine in accordance with the school/setting policy. I will inform the school/setting immediately, in writing, if there is any change in dosage or frequency of the medication or if the medicine is stopped.

Parent's signature .....Date:.....

Print name .....

Parent's contact number in case of query .....