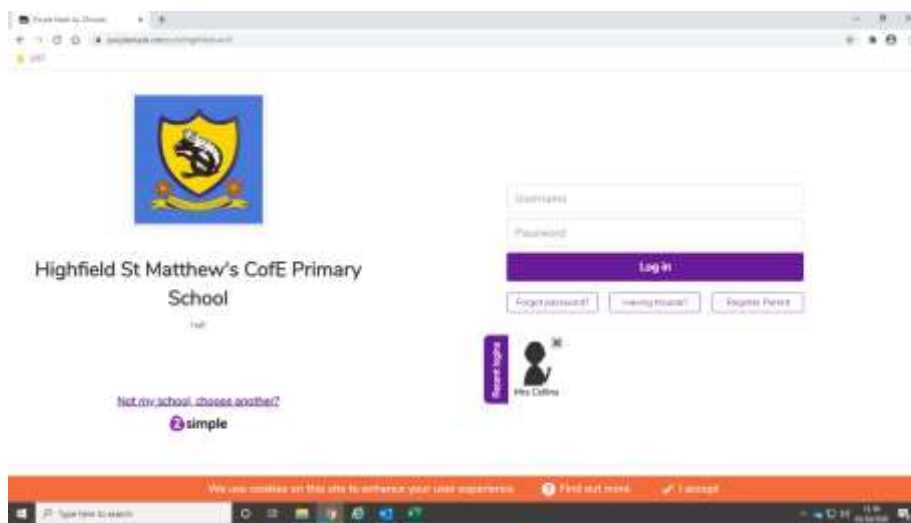


# Purple Mash instructions for parents and pupils

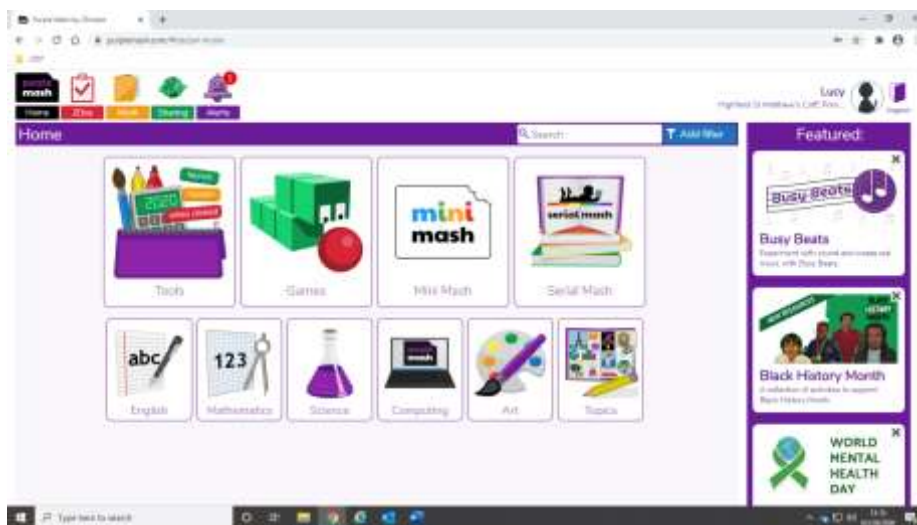
In the event of a full or partial school closure, we will be setting work for the children to follow on Purple Mash. We used this same platform during the spring closure and also follow the computing scheme of work through them so the children will be familiar with the system.

Everyone has been given their own personal username and password which they have in their reading journal.

Use the web address <https://www.purplemash.com/sch/highfield-wn3> and you should see the following page.



Once logged in, you should see the home screen with option tabs along the top.

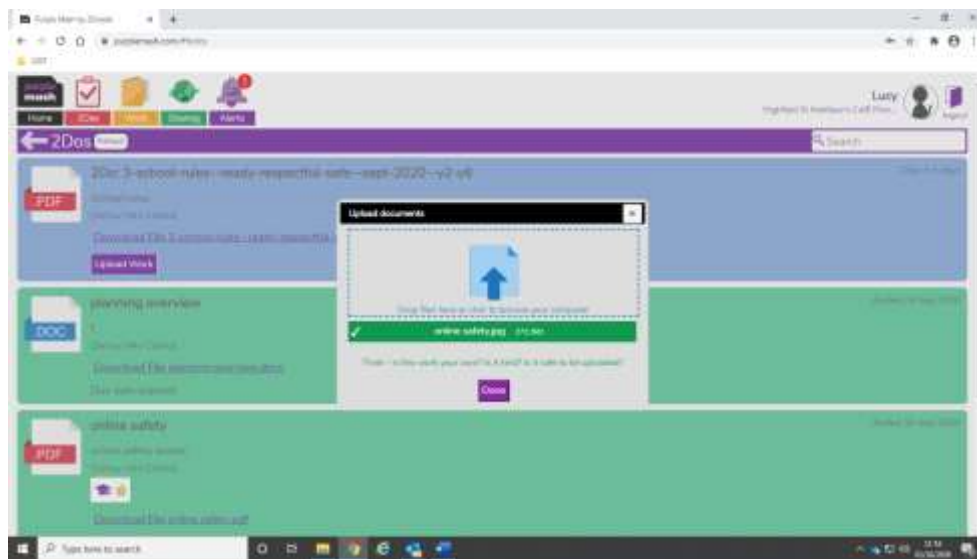


# Purple Mash instructions for parents and pupils

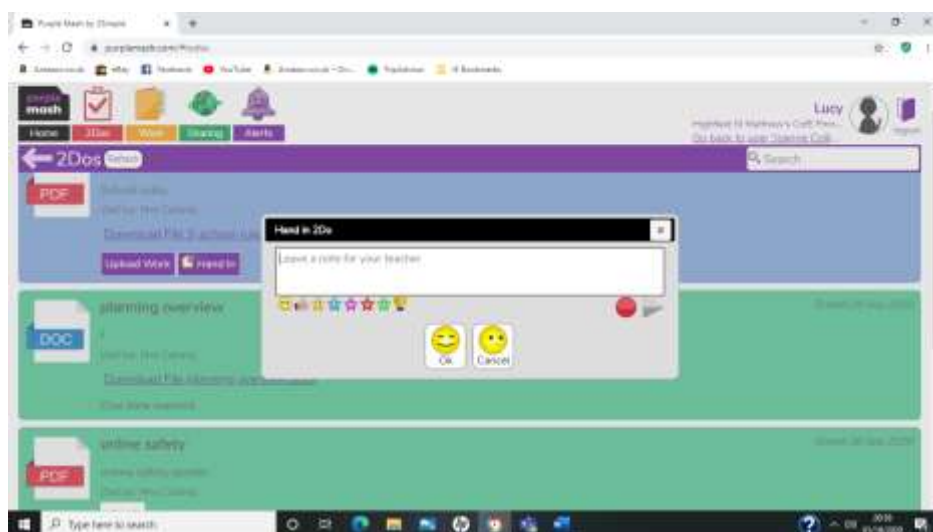
Your child's teacher will often set tasks as a '2Do' to be completed. These are activities and tasks which your child can access either via the notification bell or by clicking the red 2Do icon at the top of the screen.

When you select the 'To Do' tab, you should see a list of work that has been set for your child in date order. After the due by date has passed, your child will not be able to complete or hand in their work if they haven't already done so.

We plan to use the Purple Mash platform to add external documents for your child to complete. They have the option to download the document from the 'to do' list which can be written out on paper or printed off at home to be completed. Once complete, we ask that you take a picture of the work and 'upload' the work for the teacher to view.



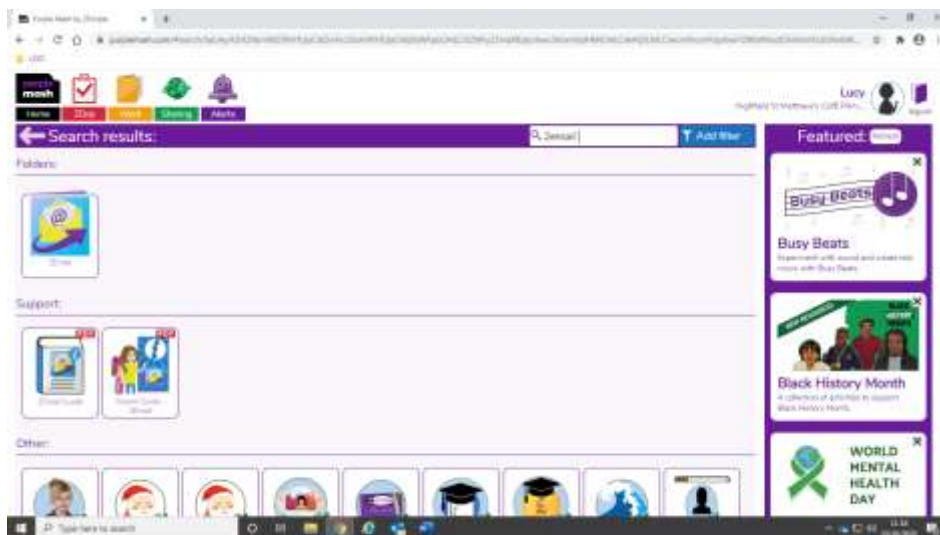
Once they start a piece of work, they can stop at any point and return to the 2Do menu and complete another time using the 'continue work' button. When they are happy they are finished with their work, they can 'hand in'. When they do this, they are prompted to leave their teacher a comment as to how well they got on. If they wish, they can record a voice message for their teacher to listen to, by selecting the red circle.



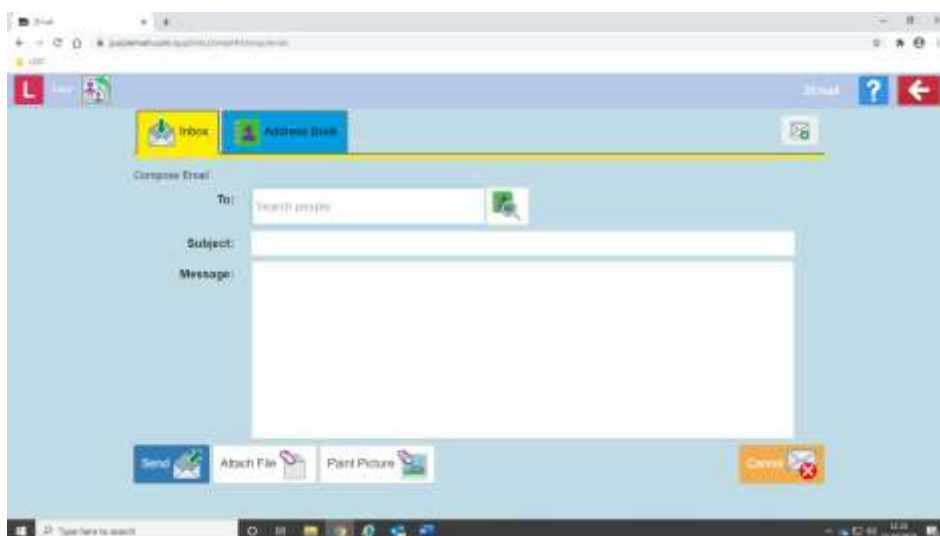
# Purple Mash instructions for parents and pupils

Once the work has been handed in, the class teacher will be able to view and give rewards for the completed work.

If your child has a query and needs to contact the teacher, they can do so by using the '2email' section of the website.

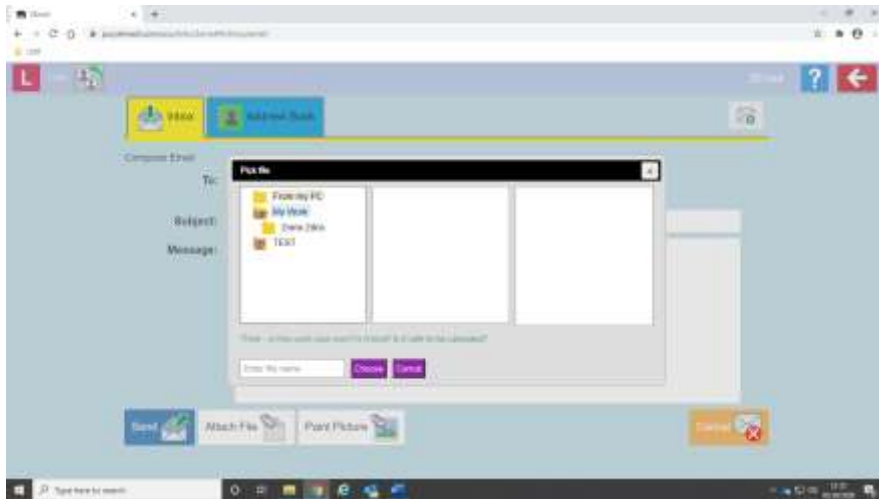


Add the teachers name or search the contacts to find the relevant teacher.

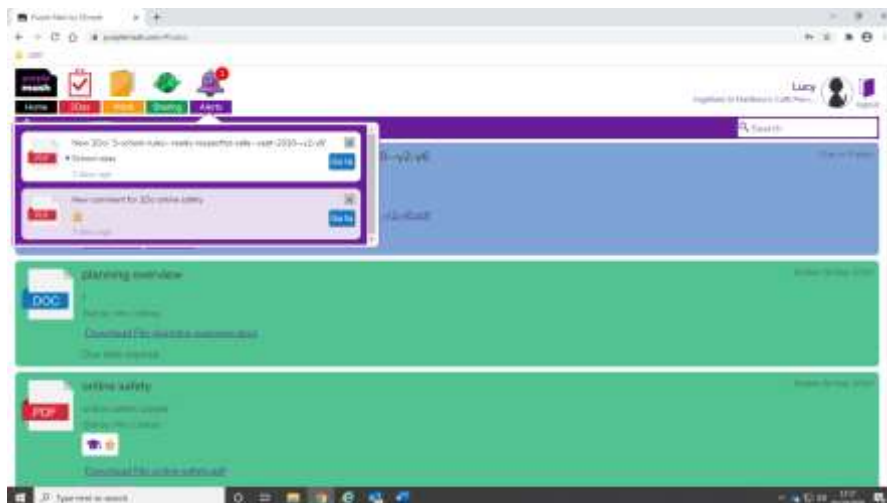


# Purple Mash instructions for parents and pupils

You can also add any attachments of photographs of work or saved documents that are relevant to the email by clicking on the 'attach file' tab.



Once the email has been sent, your child will be alerted to any replies or comments on their work through the 'Alerts' tab.



If you experience any problems with access to Purple Mash then please contact your class teacher through the class email address on our year group web pages. Please note, this email address will only be manned during periods of class or whole school isolation.

# Purple Mash instructions for parents and pupils